

OPTIKA[®]

M I C R O S C O P E S
I T A L Y



B-810 & B-1000 Series

Research Upright Microscopes

B-810 & B-1000 Series



Research Upright Microscopes

OPTIKA Microscopes, thanks to the long experience achieved in microscopy development, has conceived the new B-1000: a major leap in our technological offer. As a flagship instrument, B-1000 originates from customer most demanding feedbacks and needs. Its modularity and versatility will allow to find the perfect place in any clinical or basic research laboratory. All controls are easily accessible and comfortable also for extended periods of observation.

B-1000 is built on IOS Infinity Corrected optical system, which gives both top-notch optical performances, and the possibility to extend your instrument with the broad range of accessories and modules. X-LED illumination is the best solution to have pure white light, very intense even at higher magnification, and optimum power efficiency given by solid state source.

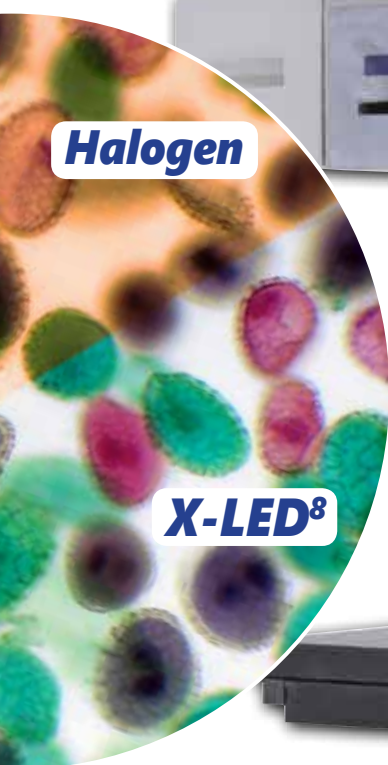
If you are looking for our best solution to your present and future professional demands, B-1000 is the answer.



Highest category of optical equipment among our product range guarantees a sharp and clear view in any situation, while top level mechanical design offers sturdiness and long lifetime.



B-810 & B-1000 Series



Halogen

X-LED⁸



Research Upright Microscopes

Solid Stand – Extra Stability

A completely new design and a die-cast aluminum stand offer solidity and durability, even for the most demanding laboratory use.

This new microscope can seamlessly be upgraded with many attachments that extend its field of use.

X-LED White Illumination

X-LED illumination system is based on a pure white high-efficiency LED and a special optics. It guarantees constant color temperature, no heat, and an extreme electrical consumption efficiency. The whole system is pre-aligned and boasts a lifetime of 50,000 hours.

X-LED benefits

Powerful pure white LED illumination, ideal for brightfield, darkfield and phase contrast applications. Constant color temperature through all the intensity levels. No heat generation, avoiding damage of the specimen.

Factory pre-centering assures uniform illumination over the field of view, yet providing perfect Koehler alignment. Very long lifetime and high power efficiency.

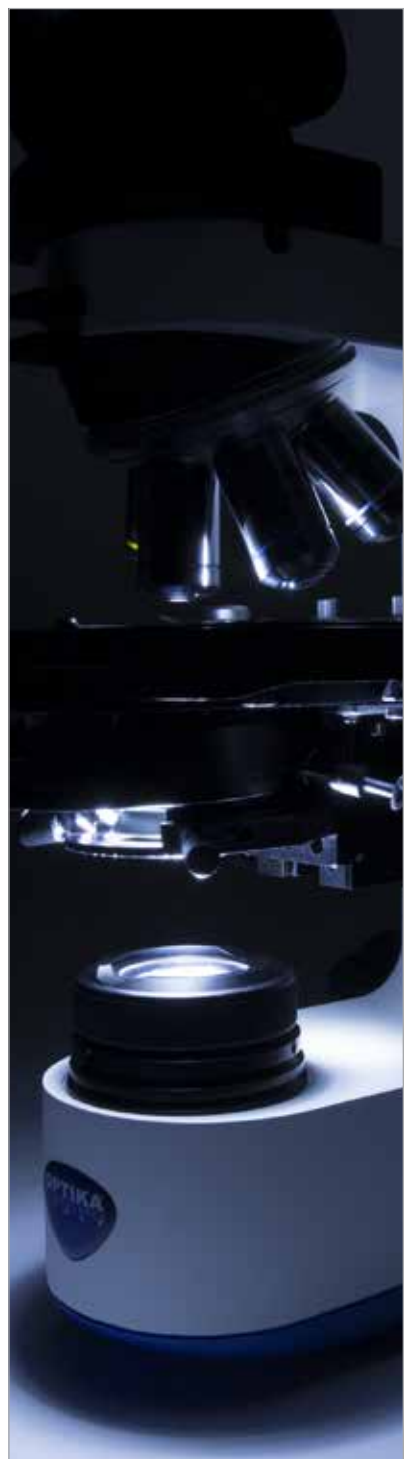
Light under control

Intelligent control of the microscope illumination: the “AUTO-OFF” function automatically switches the light off after a user-selectable time period. “BOOST” gives an extra high level of illumination for light-demanding applications. “AUTO” allows to store an illumination level, and to maintain it throughout the inspection.



Ergonomy

Low position focus and stage controls allow a fast and comfortable operation. Frequently used controls as light intensity adjustment and diaphragm are also placed in the lower part of the stand and enable operation without having to take the eyes off the specimen. All optical heads are equipped with high-point eyepieces and dioptic adjustment, for the best viewing experience.



B-810 & B-1000 Series

Modularity – Build your own solution

Many worlds in one instrument. Modularity allows to build the desired solution (brightfield, darkfield, phase contrast, material science, fluorescence, motorized automation and so on). B-1000 has the flexibility to help your work the best way.

Comfortable Stage

Refined belt-driven stage, with a wide working surface and a highly precise XY movement.

High Quality IOS Optical System

Infinity corrected optical system, based on planachromatic, fluorite and semi-apochromatic objectives, designed to give sharp and clear images, both for the user and the digital camera. Quintuple and sextuple nosepieces give the flexibility to build the objectives that best suits your needs. The system is completed with wide field, high-point eyepieces, with a field number of 24mm.

Ready for Digital Imaging

Range of adapters can accommodate for C-mount digital cameras, as well as reflex cameras. Focus adjustment gives perfectly clear digital images. Our cameras include specific software for capturing, measuring, marking and storing your images. Pro View software allows to perform image acquisition, post-processing, measurements and storage of your images. User can save a preset for later work, or even create a multi-focus composition.



Research Upright Microscopes

Remote-controlled microscope

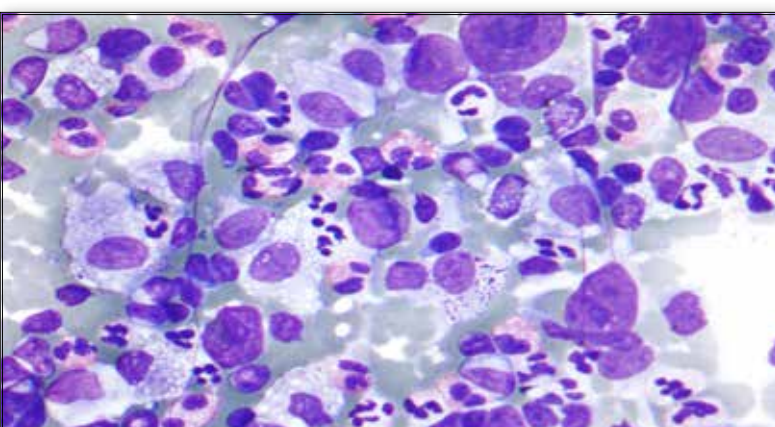
The stage can be remote-controlled through a dedicated software: X, Y, Z axes, as well as nosepiece, can be moved with a single click. Communication protocol is available for interfacing with custom software, such as automated analysis or autofocus.

X-Y-Z motorized stage
Motorized nosepiece



B-810 & B-1000 Series

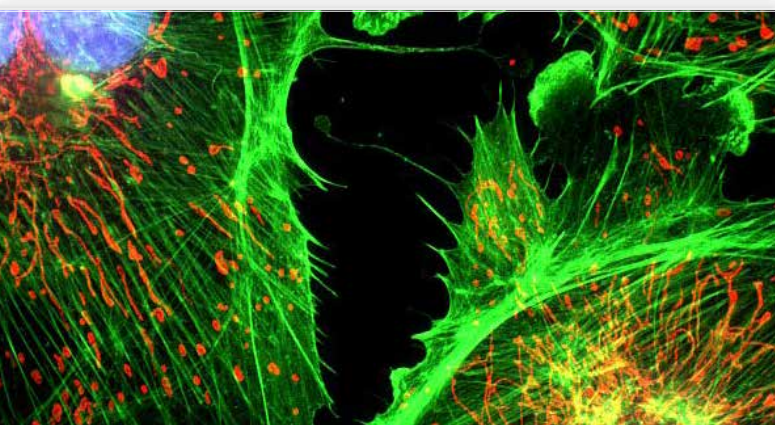
B-1000 is completely designed and made in Italy to ensure the highest quality and reliability. Our designers worked on original shapes and look, to guarantee the best ergonomics and stability.



Pathology / Cytology

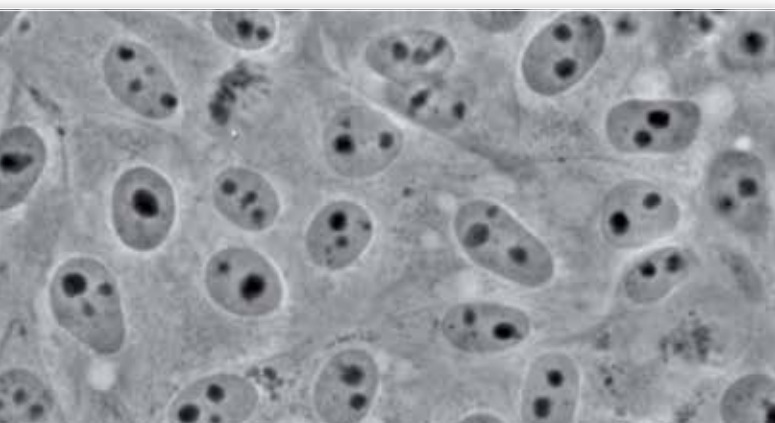
Since B-810 / B-1000 use white LED illumination, they can maintain the same color temperature even if the brightness is changed. "AUTO" function automatically adjusts the light intensity when the objective is changed or the aperture diaphragm is set to a different value.

These features, along with motorized stage and ergonomic controls, make your workflow easier.



Fluorescence Microscopy

A new attachment for epi-fluorescence provides the ultimate solution in the field of fluorescence diagnostic. Vibration-free six positions filter wheel with shutter, field and aperture diaphragms offer all you need for a complete analysis. Custom filtersets are available and mounted on request. For application where efficiency, rapidity and ease of use are crucial, this model offers also a LED epi-fluorescence attachment, with very high power standard illuminators.



Phase Contrast Microscopy

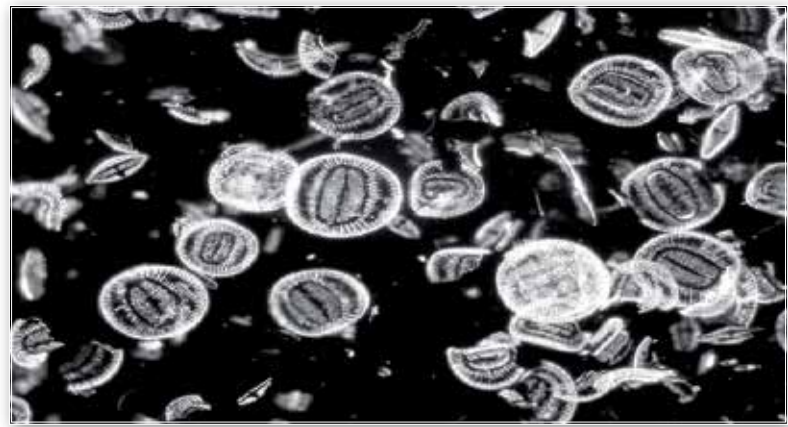
The bright LED illuminator brings a comfortable view in phase contrast with all magnifications. Universal wheel condenser allows to quickly switch between brightfield, darkfield and phase contrast.

Ideal for clinical laboratories or fibers (e.g. asbestos) analysis.

Observation Methods

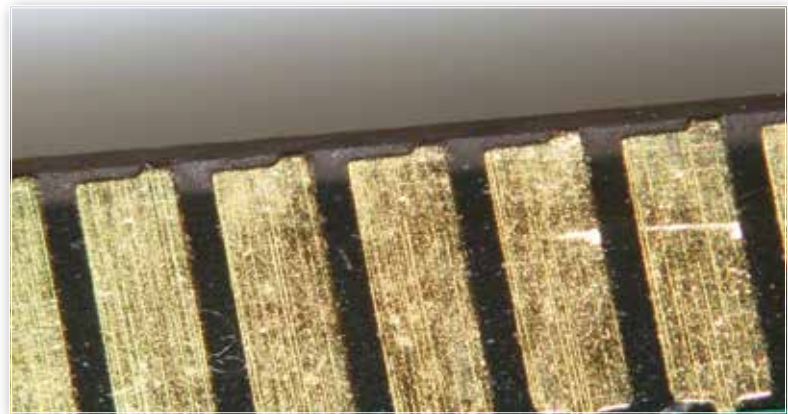
Darkfield Microscopy

Ideal for observing blood cells, diatoms, small insects, bone, fibers, unstained bacteria, yeast, protozoa, mineral and chemical crystals, colloidal particles, dust-count specimens, and thin sections of polymers and ceramics.



Material Science

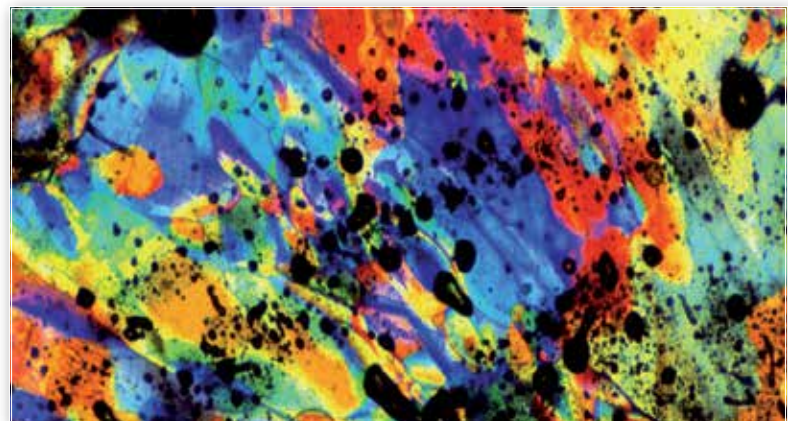
A new attachment designed specifically for metallographic inspection, with dedicated objectives set, for the most complete epi-illumination analysis: brightfield, darkfield and polarizing view observations.



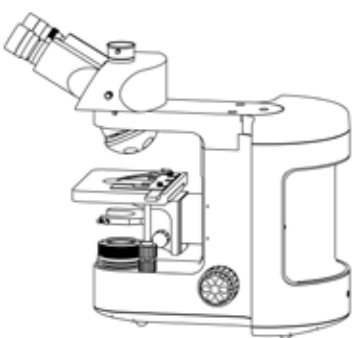
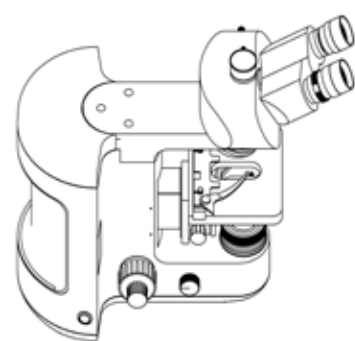
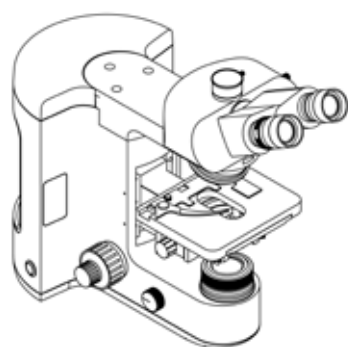
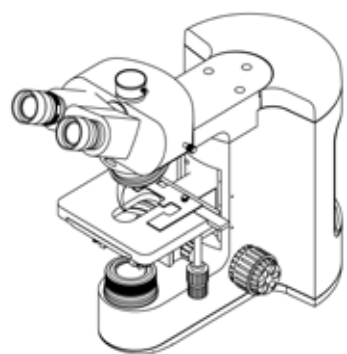
Polarizing Microscopy

Polarized light microscopy is used in geological applications or also for both natural and industrial minerals, composites such as concretes, ceramics, mineral fibers and polymers, and crystalline or biological molecules such as DNA, starch, wood and urea.

Attachments for a full polarization analysis are available (both for transmitted and incident light), so it's possible to look at color fringes right away.



B-810 & B-1000 Series



Design and production

OPTIKA workshop provides the facilities for precise and reliable optomechanical manufacturing, essential for this kind of instruments.

CNC machining department, equipped with 5-axis milling machine and lathe.



Work in progress inside the milling machine.



Die-cast stands ready to be processed.



Microscope stands exiting from the internal varnishing facility.



All processes are carefully monitored through the application of **ISO 9001 Quality System standards**.

B-810 & B-1000 Series

Eyepieces



M-1001

PL10x/22 eyepieces (pair),
high eyepoint, with rubber cup
(retractable)



M-1002

PL10x/24 eyepieces (pair),
high eyepoint, with rubber cup
(retractable)



M-1003

PL15x/16 eyepieces (pair),
high eyepoint



M-781

PL10x/22 eyepiece, high eyepoint,
with micrometric scale (10mm/100um)
& rubber cup (retractable)



AA-01

12.5x/18 eyepieces (pair),
high eyepoint, with dioptic adjustment,
one with W&B reticle for Asbestos

Choose Your Components

Heads



M-1010

Trinocular head, two positions (100/0, 50/50)



M-1011

Trinocular head, three positions (100/0, 50/50, 0/100)



M-1012

Binocular ERGO head



M-1013

Trinocular ERGO head, two positions (100/0, 50/50)



M-1188

Trinocular head, single position (50/50) for B-810

B-810 & B-1000 Series

Body



M-1187

Main body with focus system and X-LED³ illumination



M-1021B

Main body with focus system and X-LED⁸ illumination, for general purposes



M-1021M

Main body with focus system and X-LED⁸ illumination, for metallurgical model



M-1022M

Main body with focus system, for metallurgical model with incident light only

M-1156

Upgrade (controller) for any kind of motorization (stage, Z-axis, nosepiece, or all of them together)

M-1149

Motorization of Z-axis

Choose Your Components

Nosepieces



M-1040

Quintuple reversed nosepiece, for RMS objectives



M-1041

Sextuple reversed nosepiece, for RMS objectives



M-1042

Sextuple reversed nosepiece, for RMS objectives with DIC slot



M-1043

Sextuple motorized reversed nosepiece, for RMS objectives with DIC slot



M-1044

Quintuple reversed nosepiece, with centration positions for POL objectives



M-1045

Quintuple reversed nosepiece for darkfield MET objectives, with 3 adapter rings for RMS objectives



M-1046

Quintuple motorized reversed nosepiece for darkfield MET objectives, with 3 adapter rings for RMS objectives

B-810 & B-1000 Series

Objectives



Plan Objectives - IOS W-PLAN Series



- M-1049** IOS W-PLAN objective 2x/0.08
- M-1125** IOS W-PLAN objective 4x/0.10
- M-1126** IOS W-PLAN objective 10x/0.25
- M-1127** IOS W-PLAN objective 20x/0.40
- M-1128** IOS W-PLAN objective 40x/0.65
- M-1129** IOS W-PLAN objective 60x/0.80
- M-1130** IOS W-PLAN objective 100x/1.25 (oil)

Plan Semi-APO Objectives - IOS W-PLAN F Series



- M-1060** IOS W-PLAN F objective 4x/0.13
- M-1061** IOS W-PLAN F objective 10x/0.30
- M-1062** IOS W-PLAN F objective 20x/0.50
- M-1063** IOS W-PLAN F objective 40x/0.75
- M-1064** IOS W-PLAN F objective 100x/1.30 (oil)

Plan Semi-APO Objectives - IOS U-PLAN F Series



- M-1075** IOS U-PLAN F objective 4x/0.13
- M-1076** IOS U-PLAN F objective 10x/0.30
- M-1077** IOS U-PLAN F objective 20x/0.50
- M-1078** IOS U-PLAN F objective 40x/0.75
- M-1079** IOS U-PLAN F objective 100x/1.30 (oil)

Plan Objectives - IOS W-PLAN POL Series



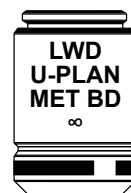
- M-1080** IOS W-PLAN POL objective 4x/0.10
- M-1081** IOS W-PLAN POL objective 10x/0.25
- M-1081.5** IOS W-PLAN POL objective 20x/0.45
- M-1082** IOS W-PLAN POL objective 40x/0.65
- M-1083** IOS W-PLAN POL objective 60x/0.85

Plan Objectives - IOS LWD U-PLAN POL Series



- M-1090** IOS LWD U-PLAN POL objective 5x/0.15
- M-1091** IOS LWD U-PLAN POL objective 10x/0.30
- M-1092** IOS LWD U-PLAN POL objective 20x/0.45
- M-1093** IOS LWD U-PLAN POL objective 50x/0.55

Plan Objectives - IOS LWD U-PLAN MET BD Series



- M-1094** IOS LWD U-PLAN MET BD objective 5x/0.15
- M-1095** IOS LWD U-PLAN MET BD objective 10x/0.30
- M-1096** IOS LWD U-PLAN MET BD objective 20x/0.45
- M-1097** IOS LWD U-PLAN MET BD objective 50x/0.55
- M-1098** IOS LWD U-PLAN MET BD objective 100x/0.80

Choose Your Components



Plan Objectives - IOS LWD U-PLAN MET Series



- M-1100** IOS LWD U-PLAN MET objective 5x/0.15
- M-1101** IOS LWD U-PLAN MET objective 10x/0.30
- M-1102** IOS LWD U-PLAN MET objective 20x/0.45
- M-1103** IOS LWD U-PLAN MET objective 50x/0.55
- M-1104** IOS LWD U-PLAN MET objective 100x/0.80

Plan Objectives - IOS LWD W-PLAN MET Series



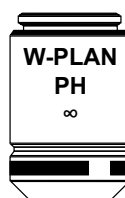
- M-1099** IOS LWD W-PLAN MET objective 2.5x/0.08 (with depolarizer)

Plan Objectives - IOS LWD W-PLAN MET BD Series



- M-1109** IOS LWD W-PLAN MET BD objective 5x/0.12
- M-1110** IOS LWD W-PLAN MET BD objective 10x/0.25
- M-1111** IOS LWD W-PLAN MET BD objective 20x/0.40
- M-1112** IOS LWD W-PLAN MET BD objective 40x/0.60
- M-1113** IOS LWD W-PLAN MET BD objective 50x/0.75
- M-1114** IOS LWD W-PLAN MET BD objective 100x/0.80

Plan Objectives - IOS W-PLAN PH Series



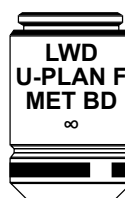
- M-1120.N** IOS W-PLAN PH objective 10x/0.25
- M-1121.N** IOS W-PLAN PH objective 20x/0.40
- M-1122.N** IOS W-PLAN PH objective 40x/0.65
- M-1123.N** IOS W-PLAN PH objective 100x/1.25 (oil)

Plan Semi-APO Objectives - IOS LWD U-PLAN F MET Series



- M-1171** IOS LWD U-PLAN F MET objective 5x/0.15
- M-1172** IOS LWD U-PLAN F MET objective 10x/0.30
- M-1173** IOS LWD U-PLAN F MET objective 20x/0.50
- M-1174** IOS LWD U-PLAN F MET objective 50x/0.80
- M-1175** IOS LWD U-PLAN F MET objective 100x/0.90

Plan Semi-APO Objectives - IOS LWD U-PLAN F MET BD Series



- M-1180** IOS LWD U-PLAN F MET BD objective 5x/0.15
- M-1181** IOS LWD U-PLAN F MET BD objective 10x/0.30
- M-1182** IOS LWD U-PLAN F MET BD objective 20x/0.50
- M-1183** IOS LWD U-PLAN F MET BD objective 50x/0.80
- M-1184** IOS LWD U-PLAN F MET BD objective 100x/0.90

B-810 & B-1000 Series

Stages



M-1140

Standard mechanical stage



M-1141

Rackless mechanical stage



M-1143

MPC (Mineral Solid Surface) rackless mechanical stage



M-1148

Metallurgical stage with glass, for metallurgical model



M-1190

Rackless mechanical stage for B-810



M-1143.1

MPC (Mineral Solid Surface) rackless mechanical stage for B-810

Choose Your Components



M-1145 + M-1146

Rotating Stage, centrable +
attachable XY stage.



M-1147

Motorized mechanical stage



M-1144

Heating stage, with digital
temperature controller



M-1190H

Heating stage, with digital
temperature controller for B-810

B-810 & B-1000 Series

Condenser



M-1150

0.90 N.A. swing-out condenser



M-1151

1.2 N.A. swing-out condenser



M-1153

0.90 N.A. swing-out POL condenser



M-1155

0.9/0.25 N.A. swing-out condenser
(to be used with objective M-1049)



M-618

Darkfield condenser for dry
objectives



M-185

Darkfield condenser for dry
objectives for B-810

Choose Your Components



M-1154

0.70 N.A. swing-out MET condenser



M-1189

0.90 N.A. swing-out condenser for B-810



M-1191

1.2 N.A. swing-out condenser for B-810



M-1124

Phase contrast condenser with insert slide 10x-40x



M-1124.NO

Phase contrast condenser with insert slide 10x-40x for B-810



M-1152.N

Phase contrast condenser 10x, 20x, 40x, 100x, BF, DF

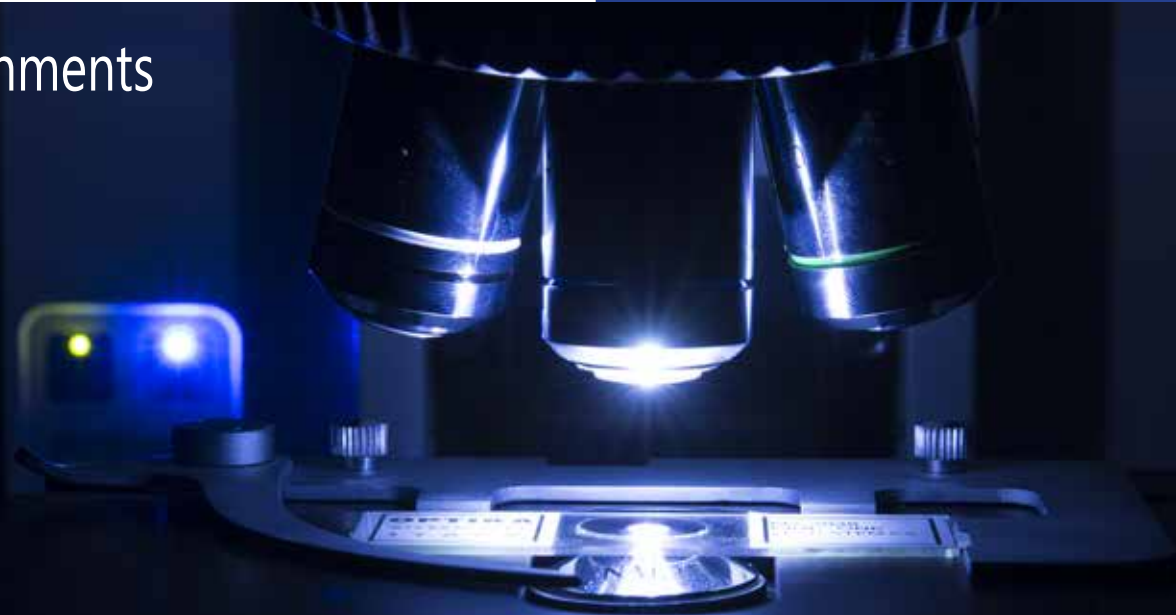


M-1152.NO

Phase contrast condenser 10x, 20x, 40x, 100x, BF, DF for B-810

B-810 & B-1000 Series

Attachments



Fluorescence attachments



M-1031

4-position LED Fluorescence attachment, with standard Blue and Green filtersets (FITC & TRITC)



M-1032

6-position HBO Fluorescence attachment, with standard Blue and Green filtersets (FITC & TRITC)

Polarizing attachments



M-1033

Bertrand lens with analyzer and slot for sliders (with Lambda, 1/4 Lambda and Quartz Edge)



M-1034

Incident polarizing attachment

ALC attachments



M-1030

Automatic Light Control (ALC) system

Choose Your Components



Discussion bridges



- M-1159** - Multi-head attachment, 1 extra head (face-to-face)
- M-1160** - Multi-head attachment, 1 extra head
- M-1161** - Multi-head attachment, 2 extra head
- M-1162** - Multi-head attachment, 4 extra head
- M-1163** - Multi-head attachment, 9 extra head

Metallurgical attachment



M-1035

Metallurgical attachment, 100 W Halogen



M-1036

Metallurgical attachment, 18 W LED

B-810 & B-1000 Series

Dic set



M-1198

Koehler DIC set for transmitted light, consisting of:

- a) Polarizing filters
- b) Interferential filter IF550
- c) DIC slider with Nomarski prism

M-870

DIC slider with Nomarski prism for incident light

Icons



Trinocular



Rotating head 360°



Field number



Infinity-corrected optics



X-LED illuminator



Max. magnification



Transmitted light



Incident light



Automatic light control



Polarized light



Anti-fungus treatment

B-810 & B-1000 Models

B-810 Models

B-810- Brightfield Research Microscope page 26

B-1000 Models

B-1000BF- Brightfield Research Microscope page 28

B-1000PH - Phase Contrast Research Microscope page 30

B-1000FL-LED - Led Fluorescence Research Microscope page 32

B-1000FL-HBO - HBO Fluorescence Research Microscope page 34

B-1000POL - Transmitted Polarizing Research Microscope page 36

B-1000POL-I - Transmitted And Incident Polarizing Research Microscope page 38

B-1000MET - Upright Advanced Metallurgical Microscope page 40

B-1000 MULTIHEAD - Discussion Microscope With Built-In Movable Pointer page 42

B-810 Series - Overview

B-810 Series is the result of the long experience gathered by OPTIKA Microscopes in the field of light microscopy, offering an extremely valuable product for routine and research laboratory brightfield & phase contrast applications.

Ergonomic design for comfortable long-term use and **smooth operation** with minimal movements meets the concept of **modularity**, to offer a the possibility to create a tailored version and match all the personal requirements.

It is qualified as an particularly performing and robust solution, considering the field of view of 22 mm, the **state-of-the-art, exclusive X-LED³ lighting source** (3.6W) and the sturdy dye-cast frame for high stability combined with a wide variety of heads, objectives and condensers to get the most out of a microscope.



B-810 - Configuration Chart

Build the microscope that suites your needs by choosing among the components



B-1000BF - Overview

Brightfield Research Microscope

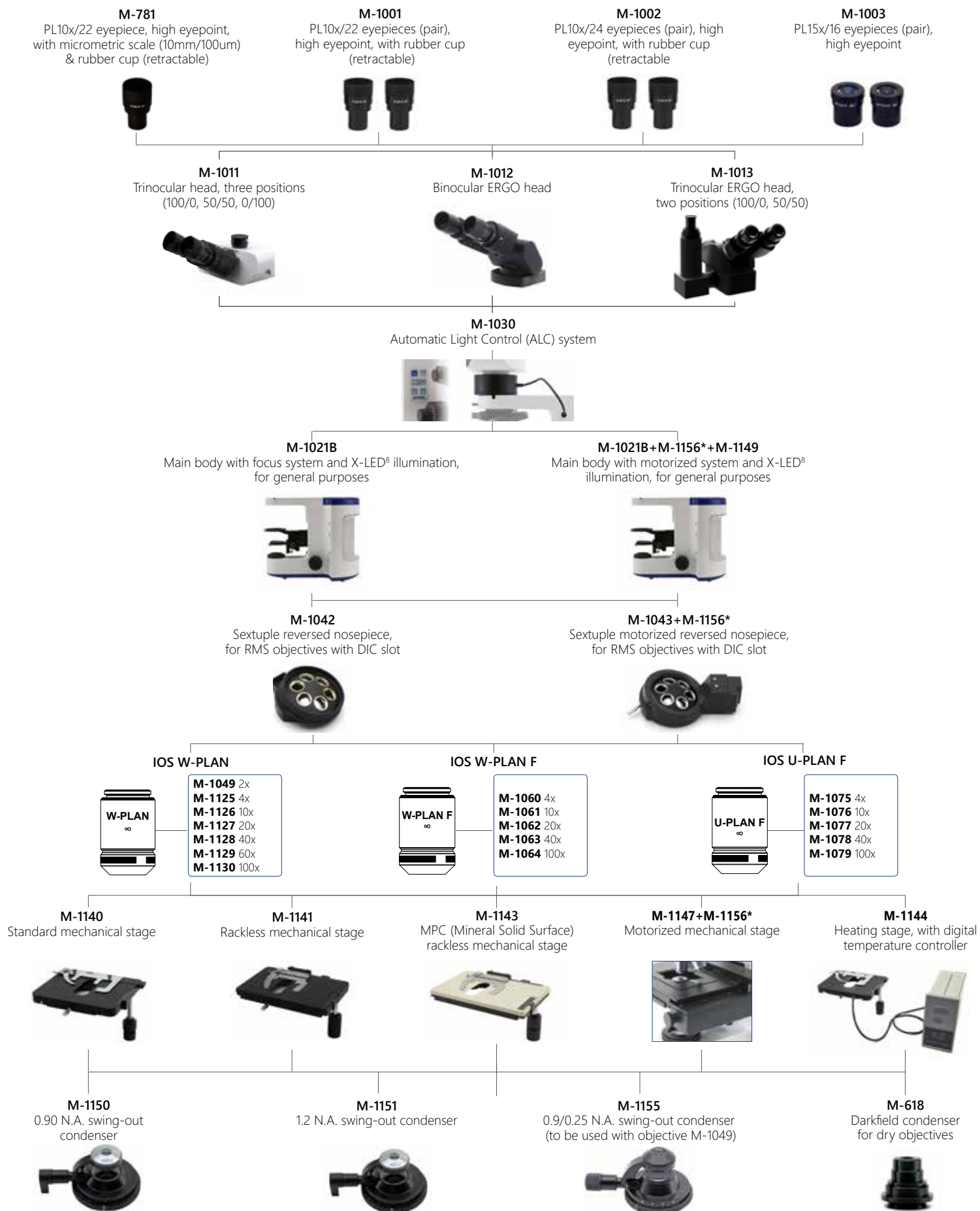
Laboratory microscope for routine and research applications with dye-cast frame for high stability, excellent ergonomics and transmitted light (X-LED[®] system) observation.

Fully modular, B-1000 Series gives multiple options of configuration: manual or motorized system, with the possibility of automatic brightness control system and a wide variety of objectives and stages.



B-1000BF - Configuration Chart

Build the microscope that suites your needs by choosing among the components



* Code M-1156 must be added only **once** for any motorized configuration

B-1000PH - Overview

Phase Contrast Research Microscope

Laboratory microscope for routine and research applications with dye-cast frame for high stability, excellent ergonomics and transmitted light (X-LED® system) observation.

Fully modular, B-1000 Series gives multiple options of configuration in phase contrast mode: manual or motorized system, with the possibility of automatic brightness control system and a wide variety of objectives and stages.



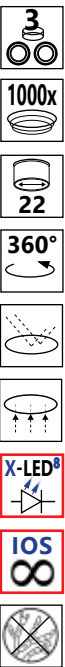
B-1000PH - Configuration Chart

Build the microscope that suites your needs by choosing among the components



* Code M-1156 must be added only **once** for any motorized configuration

B-1000FL-LED - Overview



LED Fluorescence Research Microscope

Laboratory microscope for routine and research applications with dye-cast frame for high stability, excellent ergonomics and both transmitted (X-LED[®] system) and incident light observation. Fully modular, B-1000 Series gives multiple options of configuration: manual or motorized system, plus a wide variety of objectives and stages.



Dedicated version for LED epi-fluorescence analysis with transmitted (X-LED[®], 8 W power) and epi-fluorescence (special attachment with built-in high-power colored LEDs) illumination.

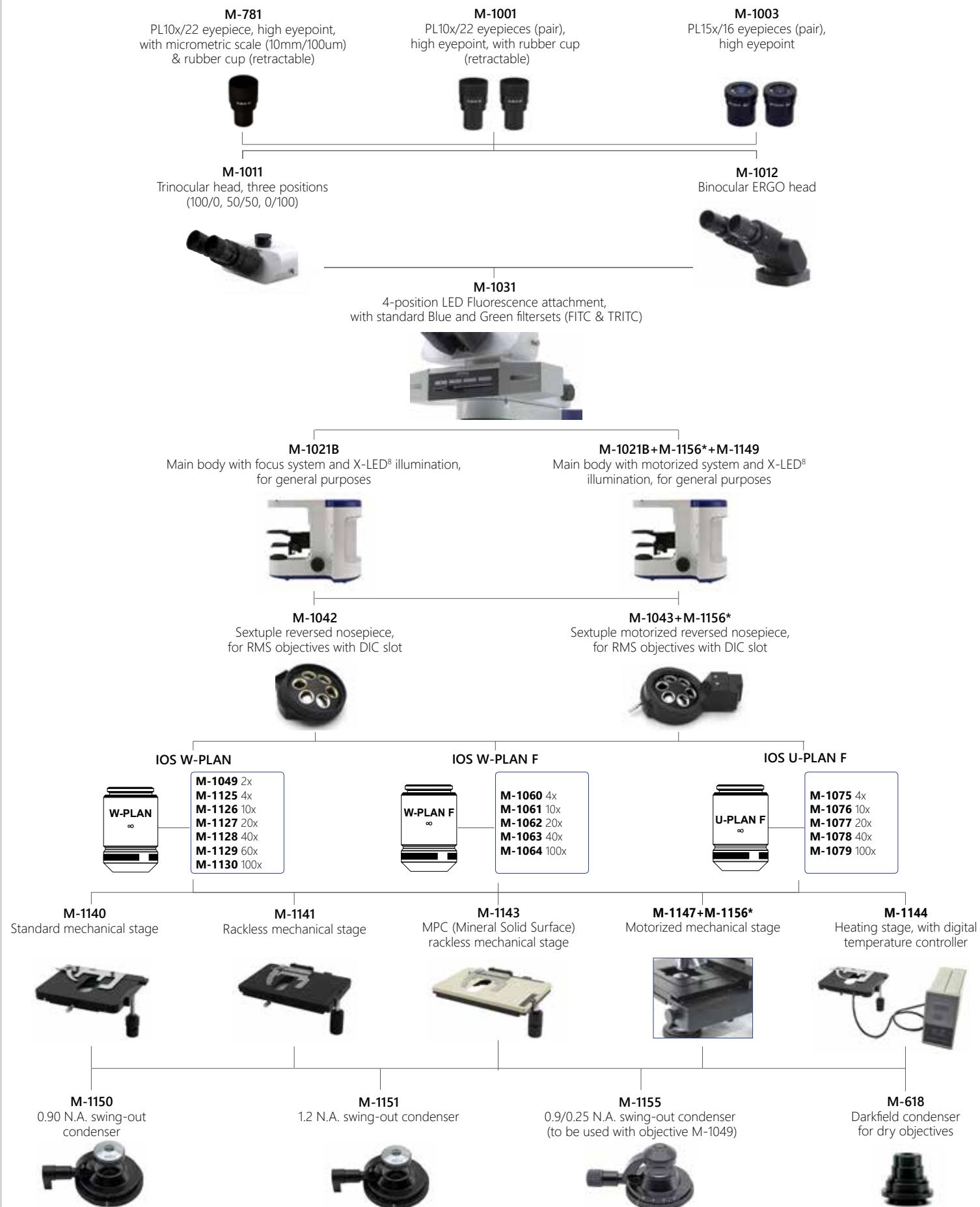
- Eliminate warm-up/cool down times
- Pre-centered system
- Extended LED lifetime
- Reduced power consumptions
- Lowest operational costs ensured

Standard filtersets (included)

Name	Excitation wavelength (nm)	Dichroic mirror cut-off (nm)	Barrier filter wavelength (nm)
B (Blue)	450-490	495	520LP
G (Green)	500-540	565	575LP

B-1000FL-LED - Configuration Chart

Build the microscope that suites your needs by choosing among the components

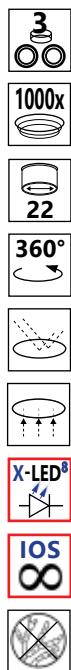


* Code M-1156 must be added only **once** for any motorized configuration

B-1000FL-HBO - Overview

HBO Fluorescence Research Microscope

Laboratory microscope for routine and research applications with dye-cast frame for high stability, excellent ergonomics and both transmitted (X-LED[®] system) and incident light observation, with the possibility to use several filters. Fully modular, B-1000 Series gives multiple options of configuration: manual or motorized system, plus a wide variety of objectives and stages.



B-1000FL-HBO - Configuration Chart

Build the microscope that suites your needs by choosing among the components



* Code M-1156 must be added only **once** for any motorized configuration

B-1000POL - Overview

Transmitted Polarizing Research Microscope

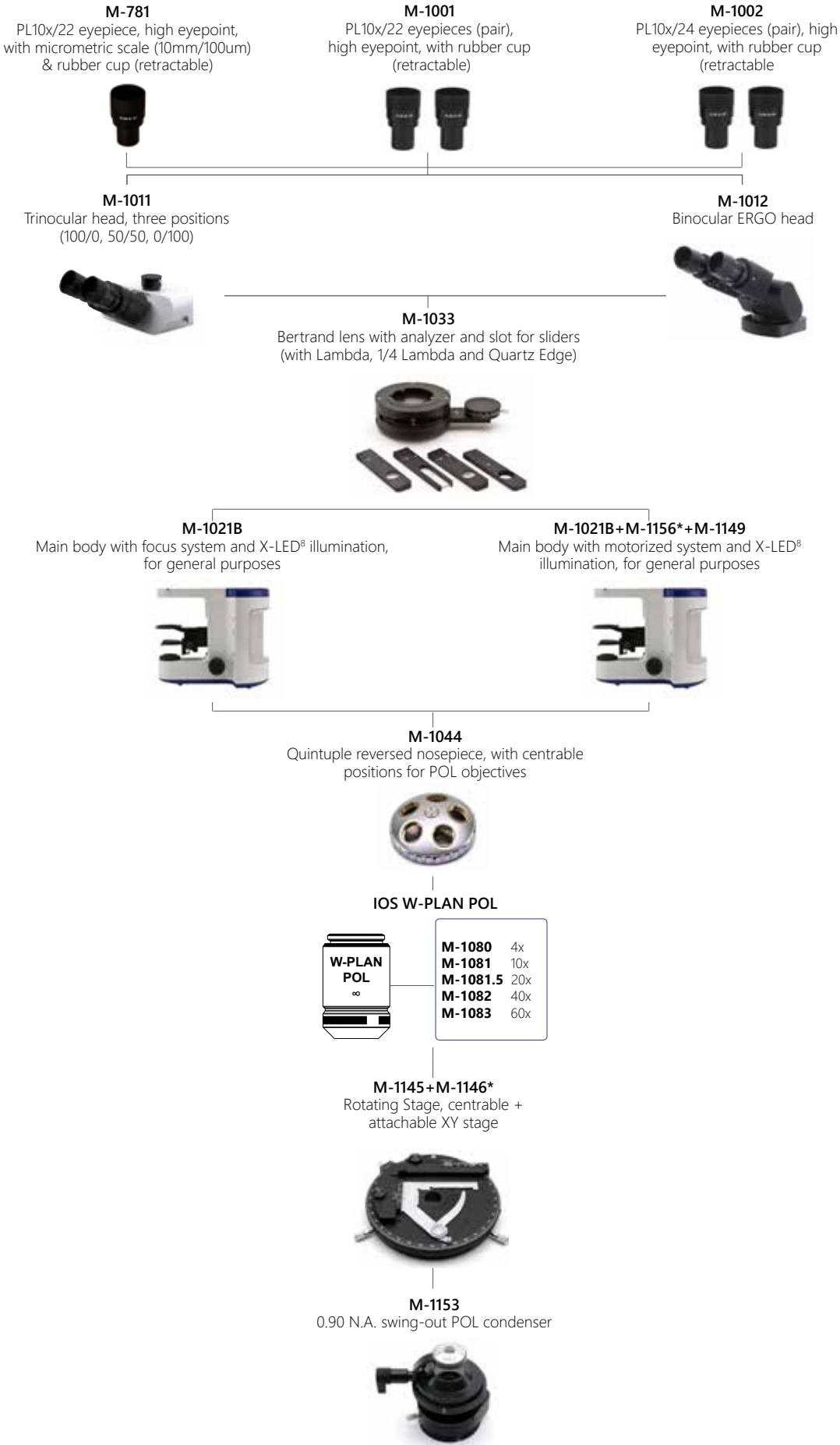
Laboratory microscope for routine and research applications with dye-cast frame for high stability, excellent ergonomy and transmitted (X-LED[®] system) light observation. Fully modular, B-1000 Series gives multiple options of configuration, including manual or motorized system.



Dedicated version for transmitted (X-LED[®], 8 W power) illumination and polarization analysis.

B-1000POL - Configuration Chart

Build the microscope that suites your needs by choosing among the components



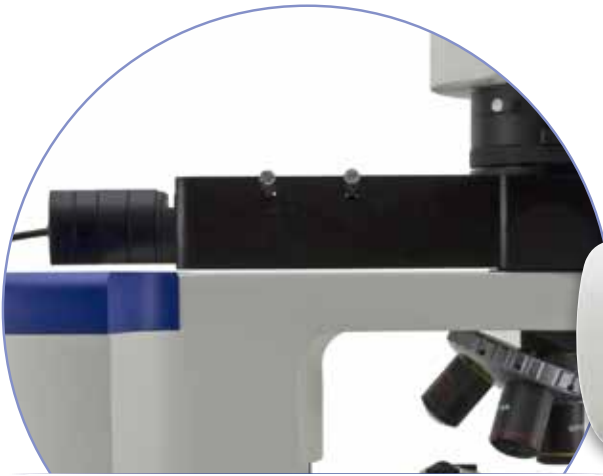
* Code M-1156 must be added only **once** for any motorized configuration

B-1000POL-I - Overview

Transmitted & Incident Polarizing Research Microscope

Laboratory microscope for routine and research applications with dye-cast frame for high stability, excellent ergonomics and transmitted (X-LED[®] system) and incident (specific high-power white LED) light observation.

Fully modular, B-1000 Series gives multiple options of configuration, including manual or motorized system.

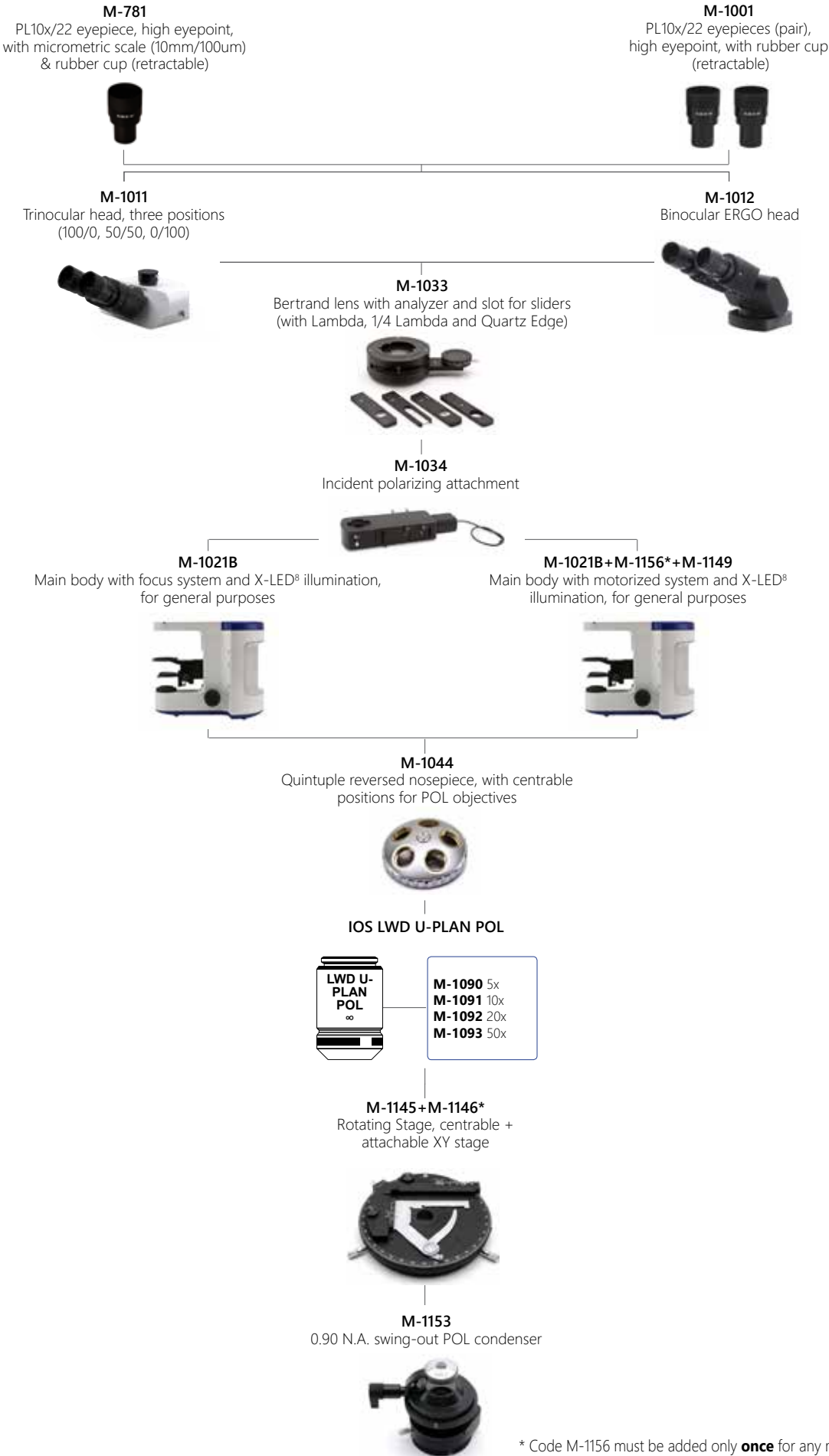


Dedicated version for transmitted (X-LED[®], 8 W power) and incident (special attachment with built-in high-power white LED) illumination.



B-1000POL-I - Configuration Chart

Build the microscope that suites your needs by choosing among the components



B-1000MET - Overview

Metallurgical Research Microscope

Laboratory microscope for routine and research applications with dye-cast frame for high stability, excellent ergonomics and transmitted (X-LED[®] system) and incident (100W halogen lamp) light observation.

Fully modular, B-1000 Series gives multiple options of configuration, including manual or motorized system and two lines of MET objectives (one both for brightfield and darkfield).



B-1000MET - Configuration Chart

Build the microscope that suites your needs by choosing among the components

M-781

PL10x/22 eyepiece, high eyepoint, with micrometric scale (10mm/100um) & rubber cup (retractable)



M-1001

PL10x/22 eyepieces (pair), high eyepoint, with rubber cup (retractable)



M-1003

PL15x/16 eyepieces (pair), high eyepoint



M-1011

Trinocular head, three positions (100/0, 50/50, 0/100)



M-1012

Binocular ERGO head



M-1035

Metallurgical attachment, 100 W Halogen



M-1036

Metallurgical attachment, 18 W LED



M-1021M

Main body with focus system and X-LED[®] illumination, for metallurgical model



M-1021M+M-1156*+M-1149

Main body with motorized focus system and X-LED[®] illumination, for metallurgical model



M-1022M

Main body with focus system, for metallurgical model with incident light only



M-1022M+M-1156*+M-1149

Main body with motorized focus system, for metallurgical model with incident light only



M-1042

Sextuple reversed nosepiece, for RMS objectives with DIC slot



M-1043+M-1156*

Sextuple motorized reversed nosepiece, for RMS objectives with DIC slot



M-1045

Quintuple reversed nosepiece for darkfield MET objectives, with 3 adater rings for RMS objectives



M-1046+M-1156*

Quintuple motorized reversed nosepiece for darkfield MET objectives, with 3 adater rings for RMS objectives



IOS LWD W-PLAN MET



M-1099 2.5x

IOS LWD U-PLAN MET



M-1100 5x
M-1101 10x
M-1102 20x
M-1103 50x
M-1104 100x

IOS LWD U-PLAN F MET



M-1171 5x
M-1172 10x
M-1173 20x
M-1174 50x
M-1175 100x

IOS LWD W-PLAN MET BD



M-1109 5x
M-1110 10x
M-1111 20x
M-1112 40x
M-1113 50x
M-1114 100x

IOS LWD U-PLAN MET BD



M-1094 5x
M-1095 10x
M-1096 20x
M-1097 50x
M-1098 100x

IOS LWD U-PLAN F MET BD



M-1180 5x
M-1181 10x
M-1182 20x
M-1183 50x
M-1184 100x

M-1148

Metallurgical stage with glass, for metallurgical model



M-1147+M-1156*

Motorized mechanical stage



M-1154

0.70 N.A. swing-out MET condenser



* Code M-1156 must be added only **once** for any motorized configuration

B-1000 Multi-Head - Overview

Teaching and discussion microscopes provide the ability for multiple people to view a specimen simultaneously - perfect for the teaching environment. The main head is equipped with an LED movable pointer to make it easier to show students specific aspects of samples while simultaneously looking through the microscope. Options are available for up to 10 heads on a multi-head teaching microscope system:



B-1000Ti-2 - multi-head microscope for 2 users

B-1000Ti-3 - multi-head microscope for 3 users

B-1000Ti-5 - multi-head microscope for 5 users

B-1000Ti-10 - multi-head microscope for 10 users



B-1000 Multi-Head - Configuration Chart

Build the microscope that suites your needs by choosing among the components



* Code M-1156 must be added only **once** for any motorized configuration

B-810 Series

EYEPieces

- M-1001 PL10x/22 eyepieces (pair), high eyepoint, with rubber cup (retractable)
- M-781 PL10x/22 eyepiece, high eyepoint, with micrometric scale (10mm/100um) & rubber cup (retractable)
- M-1003 PL15x/16 eyepieces (pair), high eyepoint
- AA-01 12.5x/18 eyepieces (pair), high eyepoint, with dioptic adjustment, one with W&B reticle for Asbestos

HEADS

- M-1188 Trinocular head, single position (50/50)
- M-1010 Trinocular head, two positions (100/0, 50/50)
- M-1012 Binocular ERGO head
- M-1013 Trinocular ERGO head, two positions (100/0, 50/50)

MAIN BODY

- M-1187 Main body with focus system and X-LED³ illumination

NOSEPIECES

- M-1040 Quintuple reversed nosepiece, for RMS objectives
- M-1041 Sextuple reversed nosepiece, for RMS objectives

OBJECTIVES

- M-1125 IOS W-PLAN objective 4x/0.10
- M-1126 IOS W-PLAN objective 10x/0.25
- M-1127 IOS W-PLAN objective 20x/0.40
- M-1128 IOS W-PLAN objective 40x/0.65
- M-1129 IOS W-PLAN objective 60x/0.80
- M-1130 IOS W-PLAN objective 100x/1.25 (oil)
- M-1060 IOS W-PLAN F objective 4x/0.13
- M-1061 IOS W-PLAN F objective 10x/0.30
- M-1062 IOS W-PLAN F objective 20x/0.50
- M-1063 IOS W-PLAN F objective 40x/0.75
- M-1064 IOS W-PLAN F objective 100x/1.30 (oil)
- M-1120.N IOS W-PLAN PH objective 10x/0.25
- M-1121.N IOS W-PLAN PH objective 20x/0.40
- M-1122.N IOS W-PLAN PH objective 40x/0.65
- M-1123.N IOS W-PLAN PH objective 100x/1.25 (oil)

STAGES

- M-1190 Rackless mechanical stage
- M-1143.1 MPC (Mineral Solid Surface) rackless mechanical stage for B-810
- M-1190H Heating stage, with digital temperature controller

CONDENSERS

- M-1189 0.90 N.A. swing-out condenser
- M-1191 1.2 N.A. swing-out condenser
- M-1124.NO Phase contrast condenser with insert slide 10x-40x for B-810
- M-1152.NO Phase contrast condenser 10x, 20x, 40x, 100x, BF, DF for B-810
- M-185 Darkfield condenser for dry objectives



Accessories

ACCESSORIES

15008	Immersion oil, 10ml
15104	Cleaning kit
AA-02	HSE-NPL Mark II Phase Contrast Test Slide, with Certification
DC-005	TNT dust cover, extra large (IM-5, B-810 & B-1000 Series) 820(l)x550 (h) mm
M-005	Micrometric slide, 26x76mm, with 2 X scales (1mm/100div. for biological /10mm/100div. for stereo)
M-1004.N	Centering telescope, 30mm diameter
M-1037	Gout analysis kit
M-113.1	Ring adapter, 30mm (for monocular and binocular microscopes)
M-173	Photo adapter for APS-C and Full Frame Reflex cameras
M-613	Polarizing set (filters only)
M-615	Lambda filter for polarizing set
M-617.1NO	Phase contrast set with IOS W-PLAN objective 40x for B-810
M-620	0.35x focusable C-Mount adapter (biological microscopes)
M-620.1	0.5x focusable C-Mount adapter (biological microscopes)
M-620.2	0.65x focusable C-Mount adapter (biological microscopes)
M-620.3	1x focusable C-Mount adapter (biological microscopes)
M-690	Eyecups (pair)
M-699	Universal adapter for M-173
M-977	Green filter, 45mm diameter
VP-810	IQ/OQ/PQ Manual for B-810 series



B-1000 Series

EYEPIECES

M-1001	PL10x/22 eyepieces (pair), high eyepoint, with rubber cup (retractable)
M-781	PL10x/22 eyepiece, high eyepoint, with micrometric scale (10mm/100um) & rubber cup (retractable)
M-1002	PL10x/24 eyepieces (pair), high eyepoint, with rubber cup (retractable)
M-1003	PL15x/16 eyepieces (pair), high eyepoint
AA-01	12.5x/18 eyepieces (pair), high eyepoint, with dioptric adjustment, one with W&B reticle for Asbestos

HEADS

M-1011	Trinocular head, three positions (100/0, 50/50, 0/100)
M-1012	Binocular ERGO head
M-1013	Trinocular ERGO head, two positions (100/0, 50/50)

MAIN BODY

M-1021B	Main body with focus system and X-LED [®] illumination, for general purposes
M-1021M	Main body with focus system and X-LED [®] illumination, for metallurgical model
M-1022M	Main body with focus system, for metallurgical model with incident light only
M-1156	Upgrade (controller) for any kind of motorization (stage, Z-axis, nosepiece, or all of them together)
M-1149	Motorization of Z-axis

ATTACHMENTS

M-1030	Automatic Light Control (ALC) system
M-1031	4-position LED Fluorescence attachment, with standard Blue and Green filtersets (FITC & TRITC)
M-1032	6-position HBO Fluorescence attachment, with standard Blue and Green filtersets (FITC & TRITC)
M-1033	Bertrand lens with analyzer and slot for sliders (with Lambda, 1/4 Lambda and Quartz Edge)
M-1034	Incident polarizing attachment
M-1035	Metallurgical attachment, 100 W Halogen
M-1036	Metallurgical attachment, 18 W LED

NOSEPIECES

M-1042	Sextuple reversed nosepiece, for RMS objectives with DIC slot
M-1043	Sextuple motorized reversed nosepiece, for RMS objectives with DIC slot
M-1044	Quintuple reversed nosepiece, with centrable positions for POL objectives
M-1045	Quintuple reversed nosepiece for darkfield MET objectives, with 3 adapter rings for RMS objectives
M-1046	Quintuple motorized reversed nosepiece for darkfield MET objectives, with 3 adapter rings for RMS objectives

OBJECTIVES

M-1049	IOS W-PLAN objective 2x/0.08 (this objective can not be used on B-1000PH, B-1000POL, B-1000POL-I and B-1000MET)	M-1080	IOS W-PLAN POL objective 4x/0.10	M-1109	IOS LWD W-PLAN MET BD objective 5x/0.12
M-1125	IOS W-PLAN objective 4x/0.10	M-1081	IOS W-PLAN POL objective 10x/0.25	M-1110	IOS LWD W-PLAN MET BD objective 10x/0.25
M-1126	IOS W-PLAN objective 10x/0.25	M-1081.5	IOS W-PLAN POL objective 20x/0.45	M-1111	IOS LWD W-PLAN MET BD objective 20x/0.40
M-1127	IOS W-PLAN objective 20x/0.40	M-1082	IOS W-PLAN POL objective 40x/0.65	M-1112	IOS LWD W-PLAN MET BD objective 40x/0.60
M-1128	IOS W-PLAN objective 40x/0.65	M-1083	IOS W-PLAN POL objective 60x/0.85	M-1113	IOS LWD W-PLAN MET BD objective 50x/0.75
M-1129	IOS W-PLAN objective 60x/0.80			M-1114	IOS LWD W-PLAN MET BD objective 100x/0.80
M-1130	IOS W-PLAN objective 100x/1.25 (oil)	M-1090	IOS LWD U-PLAN POL objective 5x/0.15	M-1120.N	IOS W-PLAN PH objective 10x/0.25
M-1060	IOS W-PLAN F objective 4x/0.13	M-1091	IOS LWD U-PLAN POL objective 10x/0.30	M-1121.N	IOS W-PLAN PH objective 20x/0.40
M-1061	IOS W-PLAN F objective 10x/0.30	M-1092	IOS LWD U-PLAN POL objective 20x/0.45	M-1122.N	IOS W-PLAN PH objective 40x/0.65
M-1062	IOS W-PLAN F objective 20x/0.50	M-1093	IOS LWD U-PLAN POL objective 50x/0.55	M-1123.N	IOS W-PLAN PH objective 100x/1.25 (oil)
M-1063	IOS W-PLAN F objective 40x/0.75	M-1094	IOS LWD U-PLAN MET BD objective 5x/0.15	M-1171	IOS LWD U-PLAN F MET objective 5x/0.15
M-1064	IOS W-PLAN F objective 100x/1.30 (oil)	M-1095	IOS LWD U-PLAN MET BD objective 10x/0.30	M-1172	IOS LWD U-PLAN F MET objective 10x/0.30
M-1075	IOS U-PLAN F objective 4x/0.13	M-1096	IOS LWD U-PLAN MET BD objective 20x/0.45	M-1173	IOS LWD U-PLAN F MET objective 20x/0.45
M-1076	IOS U-PLAN F objective (for DIC) 10x/0.30	M-1097	IOS LWD U-PLAN MET BD objective 50x/0.55	M-1174	IOS LWD U-PLAN F MET objective 50x/0.80
M-1077	IOS U-PLAN F objective (for DIC) 20x/0.50	M-1098	IOS LWD U-PLAN MET BD objective 100x/0.8	M-1175	IOS LWD U-PLAN F MET objective 100x/0.90
M-1078	IOS U-PLAN F objective (for DIC) 40x/0.75	M-1099	IOS LWD W-PLAN MET objective 2.5x/0.08 (with depolarizer)	M-1180	IOS LWD U-PLAN F MET BD objective 5x/0.15
M-1079	IOS U-PLAN F objective (for DIC) 100x/1.30 (oil)	M-1100	IOS LWD U-PLAN MET objective 5x/0.15	M-1181	IOS LWD U-PLAN F MET BD objective 10x/0.30
		M-1101	IOS LWD U-PLAN MET objective 10x/0.30	M-1182	IOS LWD U-PLAN F MET BD objective 20x/0.50
		M-1102	IOS LWD U-PLAN MET objective 20x/0.45	M-1183	IOS LWD U-PLAN F MET BD objective 50x/0.80
		M-1103	IOS LWD U-PLAN MET objective 50x/0.55	M-1184	IOS LWD U-PLAN F MET BD objective 100x/0.90
		M-1104	IOS LWD U-PLAN MET objective 100x/0.80		

Accessories

STAGES

- M-1140 Standard mechanical stage
- M-1141 Rackless mechanical stage
- M-1143 MPC (Mineral Solid Surface) rackless mechanical stage
- M-1144 Heating stage, with digital temperature controller
- M-1145 Rotating Stage, centrable
- M-1146 Attachable mechanical stage for rotating stage
- M-1147 Motorized mechanical stage
- M-1148 Metallurgical stage with glass, for metallurgical model

CONDENSERS

- M-1150 0.90 N.A. swing-out condenser
- M-1155 0.9/0.25 N.A. swing-out condenser (to be used with objective M-1049)
- M-1151 1.2 N.A. swing-out condenser
- M-1124 Phase contrast condenser with insert slide 10x-40x
- M-1152.N Phase contrast condenser 10x, 20x, 40x, 100x, BF, DF
- M-1153 0.90 N.A. swing-out POL condenser
- M-1154 0.70 N.A. swing-out MET condenser
- M-618 Darkfield condenser for dry objectives

DISCUSSION BRIDGES

- M-1159 Multi-head attachment, 1 extra head (face-to-face)
- M-1160 Multi-head attachment, 1 extra head
- M-1161 Multi-head attachment, 2 extra head
- M-1162 Multi-head attachment, 4 extra head
- M-1163 Multi-head attachment, 9 extra head

DIC SET

- M-1198 Koehler DIC set for transmitted light, consisting of: a) Polarizing filters b) Interferential filter IF550 c) DIC slider with Nomarski prism
- M-870 DIC slider with Nomarski prism for incident light

ACCESSORIES

- 15008 Immersion oil, 10ml
- 15104 Cleaning kit
- AA-02 HSE-NPL Mark II Phase Contrast Test Slide, with Certification on request
- CL-35 Halogen bulb 24V 100W (only for metallurgical attachment M-1035)
- DC-005 TNT dust cover, extra large (IM-5, B-810 & B-1000 Series) 820(l)x550 (h) mm
- M-005 Micrometric slide, 26x76mm, with 2 X scales (1mm/100div. for biological / 10mm/100div. for stereo)
- M-1004.N Centering telescope, 30mm diameter
- M-1037 Gout analysis kit
- M-113.1 Ring adapter, 30mm (for monocular and binocular microscopes)
- M-1164 Empty fluorescence filterblock for B-1000 FL HBO
- M-1165 Fluorescence filterset V (filterblock included) for B-1000 FL HBO
- M-1166 Fluorescence filterset UV-DAPI (filterblock included) for B-1000 FL HBO
- M-151 HBO 100W high-pressure mercury bulb for fluorescence
- M-151.1 HBO 100W high-pressure mercury bulb for fluorescence, OSRAM High-Grade
- M-173 Photo adapter for APS-C and Full Frame Reflex cameras
- M-613 Polarizing set (filters only)
- M-615 Lambda filter for polarizing set
- M-617.1N Phase contrast set with IOS W-PLAN objective 40x
- M-620 0.35x focusable C-Mount adapter (biological microscopes)
- M-620.1 0.5x focusable C-Mount adapter (biological microscopes)
- M-620.2 0.65x focusable C-Mount adapter (biological microscopes)
- M-620.3 1x focusable C-Mount adapter (biological microscopes)
- M-690 Eyecups (pair)
- M-699 Universal adapter for M-173
- M-977 Green filter, 45mm diameter
- M-ND25 Neutral density filter ND25 (for B-1000FL-HBO)
- VP-1000 IQ/OQ/PQ Manual for B-1000 series (Brightfield)
- VP-1000FL IQ/OQ/PQ Manual for B-1000 series (Fluorescence)
- VP-1000MET IQ/OQ/PQ Manual for B-1000 series (Metallurgical)
- VP-1000PH IQ/OQ/PQ Manual for B-1000 series (Phase Contrast)
- VP-1000POL IQ/OQ/PQ Manual for B-1000 series (Polarizing)



Headquarters and Manufacturing Facilities

OPTIKA® S.r.l. Via Rigla, 30 - 24010 Ponteranica (BG) - ITALIA - Tel.: +39 035.571.392 - Fax: +39 035.571.435 - info@optikamicroscopes.com

Optika Sales branches

OPTIKA® Spain spain@optikamicroscopes.com
OPTIKA® China china@optikamicroscopes.com
OPTIKA® India india@optikamicroscopes.com

OPTIKA® USA usa@optikamicroscopes.com
OPTIKA® Hungary hungary@optikamicroscopes.com